

INJECTIONS

Tim Cuchna, DVM

Northwest Veterinary Clinic
Stanwood (360) 629-4571

info@nwvetstanwood.com

INJECTIONS

- ✘ Subcutaneous vs. Intramuscular injections
- ✘ Injection sites
- ✘ Syringe handling techniques
- ✘ Practice – if time

INJECTIONS

- ✘ What can you inject?
 - + Vaccines
 - + Antibiotics
 - + Vitamins
 - + Parasite treatments
 - + Immune stimulants
 - + Reproductive hormones

INJECTIONS

- ✘ Subcutaneous (SQ)-30-45 degree angle
- ✘ Intramuscular (IM)-perpendicular to skin
- ✘ Do not inject more than 10 cc in one site. 20 cc on adult cattle

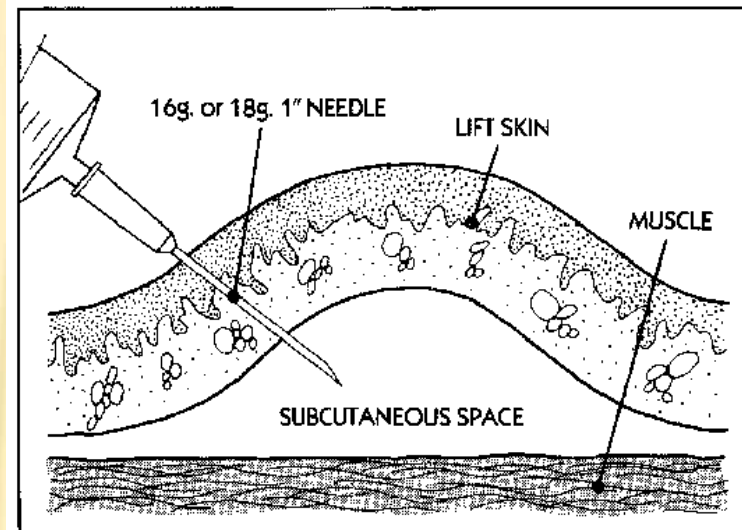
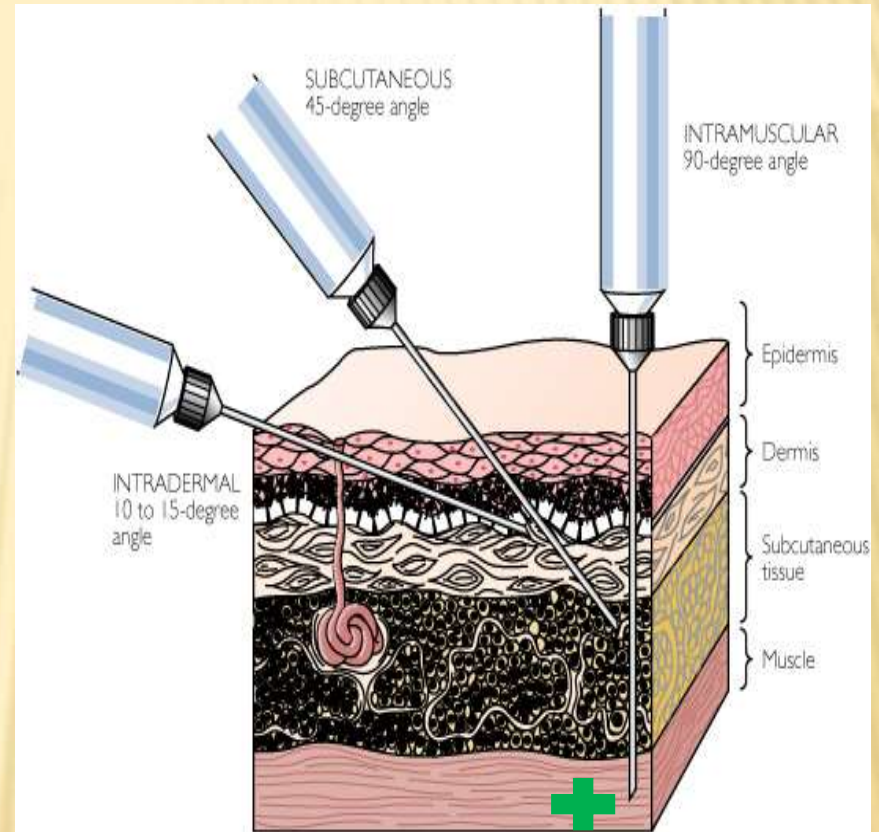


Figure 2. Subcutaneous injection.

INJECTIONS – INTRAMUSCULAR (IM)

- ✘ Intramuscular (IM)- perpendicular to skin
- ✘ Determine injection site
- ✘ Gloves & Alcohol (+/-)
- ✘ Insert needle through skin, subcutaneous layers and into muscle
- ✘ Pull back on plunger checking for signs of blood or air
- ✘ Administer the injection
- ✘ Remove the needle from the skin and gently rub the injection site
- ✘ Cap the needle and place in a sharps container

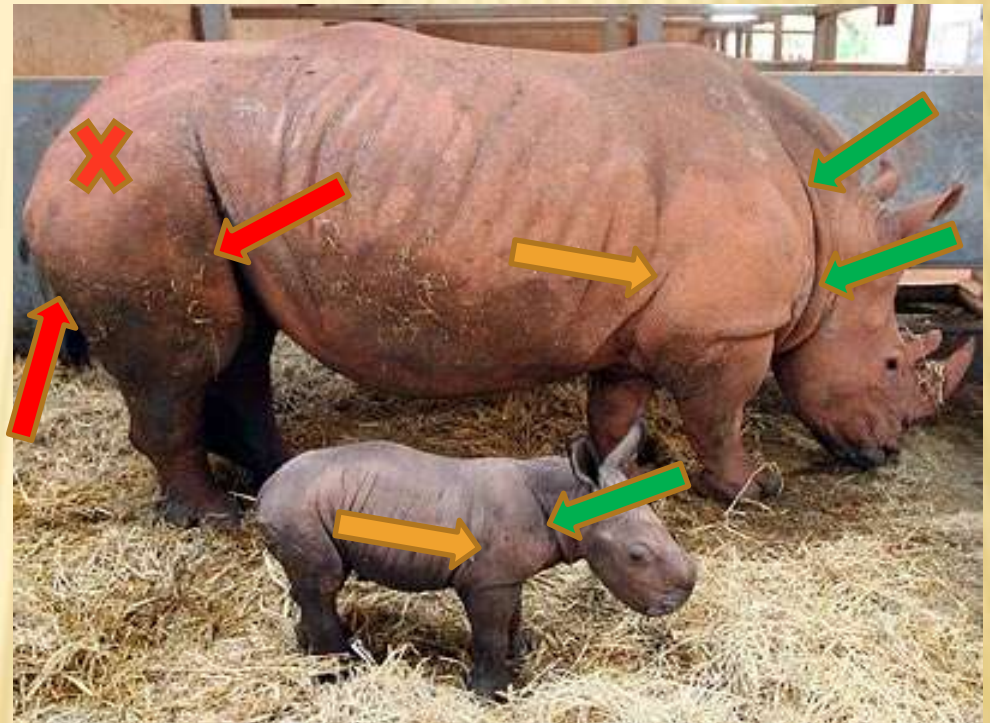


INJECTIONS

✘ Injection sites

- + Neck
- + Axillary
- + Rear leg – Always a ‘last resort’ injection site
- + Beef Quality Assurance

Young animals



INJECTIONS

- ✘ Injection site on neck
- ✘ Landmarks
 - + Front of shoulder blade – hand width on adults
 - + Top of neck line
 - + Bottom of cervical vertebrae
 - + Split the difference
 - + Triangular area



INJECTIONS

- ✘ Use appropriate size syringe & sharp needle
 - + 20 (pink) to 22 (blue) gauge needle for vaccines
 - + 16 (grey) to 18 (green) gauge needle for antibiotics



INJECTIONS

✘ Technique

- + Good restraint on animal
- + Hold syringe near base of needle
- + Bevel of needle facing out
 - cuts better
- + Quickly push needle through skin
- + Pull back on plunger, look for air/blood
- + Inject material & rub



INJECTIONS

- ✘ Questions
- ✘ Practice
 - + Choose a partner

