



# First-aid Kit

---

Tim Cuchna, DVM

Northwest Veterinary Clinic

Stanwood (360) 629-4571

[nwvetstanwood@gmail.com](mailto:nwvetstanwood@gmail.com)

# First-aid Kit



- Handout
- I am presenting most of what I carry on my truck.
- Do not expect to acquire everything right away.
- Your first-aid kit will evolve over time.

# Basic First Aid Health Care Kit



- Obstetrics
  - Antiseptic soap (Betadine/Nolvasan)
  - Lubricant (J-lube)
  - 7% Iodine – dip navels
  - Obstetrical sleeves
  - Head snare
  - OB straps
  - Hemostats
  - Dental floss
  - Bulb syringe
  - Towels
  - Bottles & nipples
  - Colostrum
- Eyes
  - Saline solution
  - Ophthalmic ointment/Spray
- Drenching
  - Dosing syringe(s)
  - Drench gun
- Injections
  - Syringes
  - Needles – 18 & 20 gauge
- Feet
  - Kopertox/Dr. Naylor's H&H
  - Hoof trimming shears
- Health assessment
  - Stethoscope
  - Thermometer
  - Fecal collection
  - Weight tape

# Basic First Aid Health Care Kit (2)



- **Poisonous plants**
  - Activated charcoal
  - Pepto-Bismol
  - Mineral oil
- **Digestive upset**
  - Baking soda
  - Pepto-Bismol
  - Injectable vitamin B complex
  - Probiotics
  - C/D antitoxin - kids
- **Diarrhea**
  - Kaopectate
  - Oral electrolytes
  - Tripectate
  - Bio-sponge
- **Anti-inflammatories (aspirin)**
- **Vaccine – CD/T**
- **Parasite treatment**
  - Internal
  - Fly spray
  - Lice powder
- **Injectable antibiotics**
  - LA 200
  - Penicillin
- **Phone numbers**
  - Veterinarian
  - Experienced goat owners

# Basic First Aid Health Care Kit (3)



- Lacerations

- Scissors
- Electric clippers
- Triple antibiotic ointment
- Wound spray
- Hemostats
- Sterile saline
- Betadine soap
- Scrub brush (soft)

- Lacerations

- Latex/nitrile gloves
- Roll cotton/ sanitary napkins
- Telfa pads
- Tape – duct, white
- Coflex
- Elastikon
- Bandage scissors

# Questions



# Over-the-Fence Exam



- Respiratory
  - Respirations 10-30 per minute
  - Nasal discharge
  - Flaring nostrils
  - Extending head to breathe
  - Coughing (at rest or with excitement)
- Digestive
  - Eating and drinking
  - Dropping or balling food
  - Vomiting
  - May be able to see rumen contractions
  - Straining
  - Diarrhea – degree/blood +/-
- Musculoskeletal
  - Lameness: which leg
  - Lameness grade I – IV
  - Swelling - location
  - Difficulty getting up
  - Body Condition Score 1 - 5
- Sensory
  - Ocular discharge
  - Squinting (blepharospasm)
  - Blindness
  - Star-gazing (opisthotonus)
  - Staggering
  - Head tilt
  - Unable to stand
  - Shaking head or scratching at ears
- Integument
  - Scratching or chewing
  - Hair or wool loss
  - Inflammation of skin
  - Crusts on nose, ears, legs
- Reproductive/Urinary
  - Abnormal discharge
  - Abnormal structures
  - Straining
  - No progress on labor

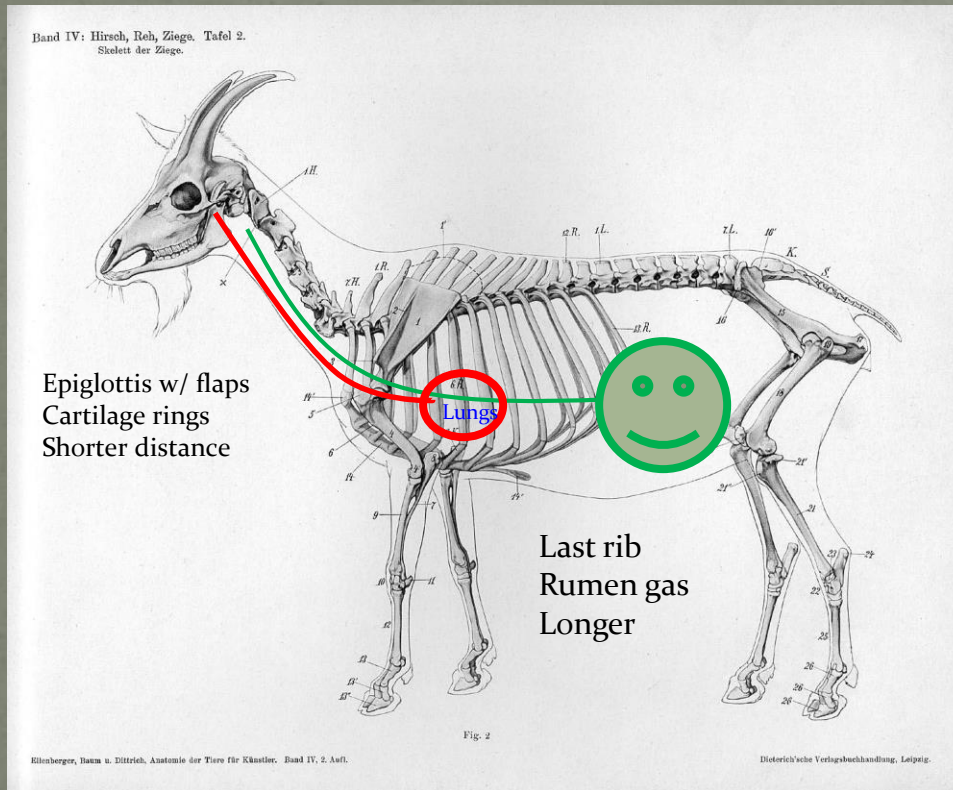


# Stomach Tube

- Equipment
  - Mouth gag
  - Stomach tube
    - Babies  $3/16'' - 1/2''$  OD
    - Adults  $3/8'' - 5/8''$  OD
  - Pump or funnel
- Times to stomach tube
  - Bloat
  - Babies that are unable to nurse or need colostrum
  - Supportive care for sick animals
  - Administer medicine for digestive upsets



# Stomach Tube – Key Points



- Trachea has cartilage rings to keep it open
- Esophagus flat and muscular. Lies on top of trachea
- Measure from nose to last rib for stomach tube
- Should be able to feel end of tube pass through neck region
- Blow on tube should get rumen gas back